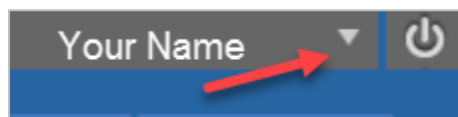


ADD AVATAR IMAGE

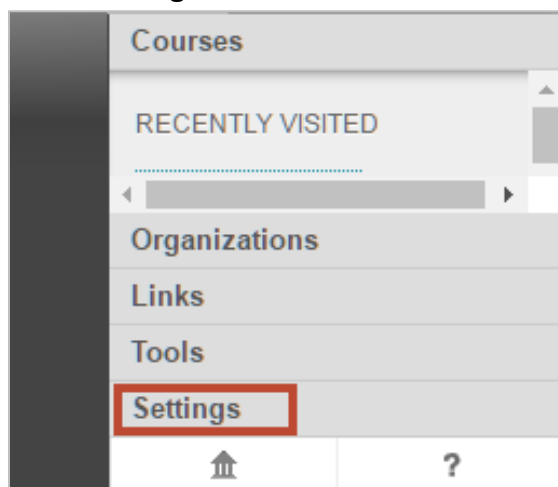
An avatar is a photo or other digital image that represents a user in ulearn. Your personal avatar appears throughout ulearn, including in the global navigation, notifications modules, and in journals, blogs, discussions, and wikis. Adding an avatar to your ulearn profile makes it easy for students to identify posts and entries added by you.

Instructions

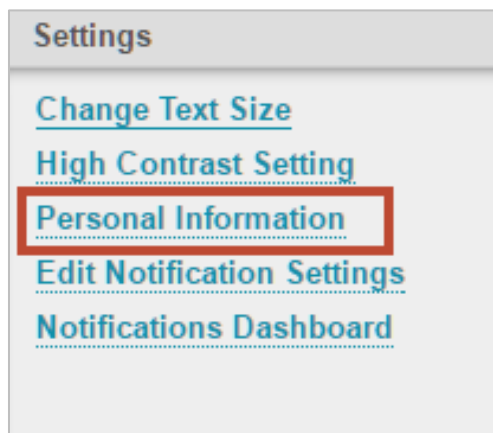
1. In the top right corner of the ulearn screen, select the arrow next to your name to access the **Global Navigation Menu**.



2. Select **Settings**.

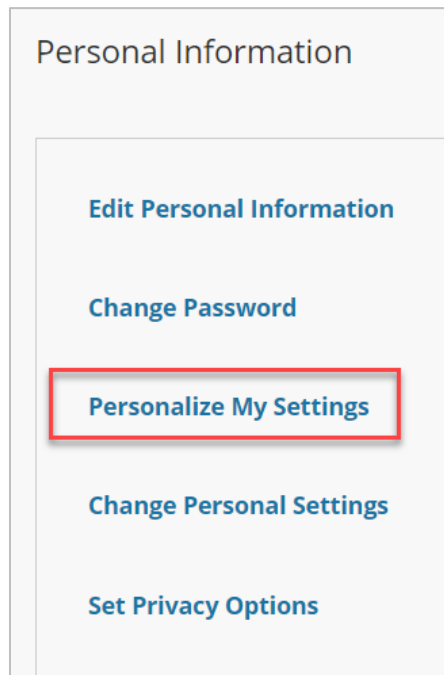


3. Select **Personal Information**.

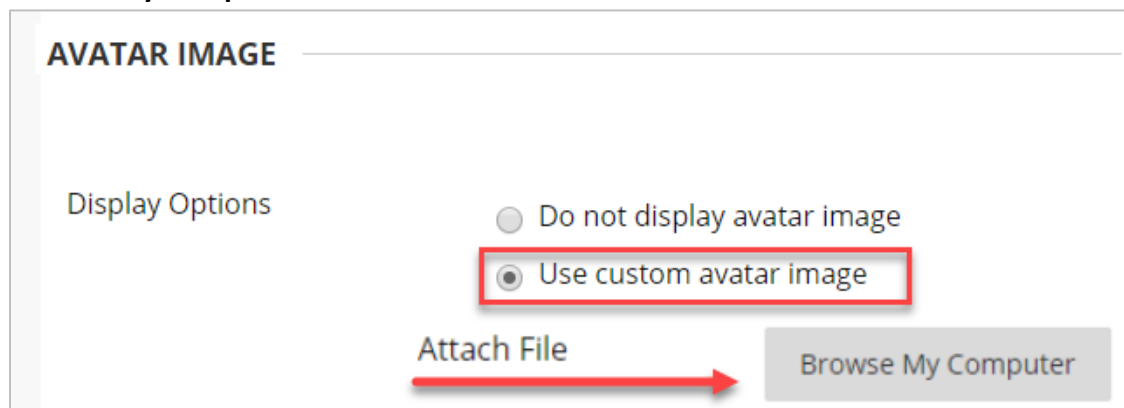


ADD AVATAR IMAGE

4. On the next screen, select **Personalize My Settings**.



5. Next to **Display Options**, select the option **Use custom avatar image**, then select **Browse My Computer**.



6. Locate and select the image on your computer, then select **Open**.
7. To finish, select **Submit**. Your avatar image is now visible.